

Current Biology

Single-Neuron Representations of Spatial Targets in Humans

Highlights

- Epilepsy patients performed a spatial navigation task during single-neuron recordings
- Neuronal firing in the medial temporal lobe represents spatial target locations
- Single-neuron activity does not represent the subject's own location in this task
- Neuronal activity also varied with heading direction and order of navigation periods

Authors

Melina Tsitsiklis, Jonathan Miller, Salman E. Qasim, ..., Ashwini Sharan, Joel M. Stein, Joshua Jacobs

Correspondence

joshua.jacobs@columbia.edu

In Brief

Tsitsiklis et al. record single-unit activity from epilepsy patients during spatial navigation. They find that the firing rates of MTL neurons vary with the locations of spatial targets, heading direction, and serial position. This suggests that the human MTL represents multiple types of spatiotemporal information to support spatial cognition.



Single-Neuron Representations of Spatial Targets in Humans

Melina Tsitsiklis,¹ Jonathan Miller,² Salman E. Qasim,² Cory S. Inman,³ Robert E. Gross,³ Jon T. Willie,³ Elliot H. Smith,⁴ Sameer A. Sheth,⁵ Catherine A. Schevon,⁶ Michael R. Sperling,⁷ Ashwini Sharan,⁸ Joel M. Stein,⁹ and Joshua Jacobs^{2,10,*}

¹Doctoral Program in Neurobiology and Behavior, Columbia University, New York, NY 10027, USA

²Department of Biomedical Engineering, Columbia University, New York, NY 10027, USA

³Department of Neurosurgery, Emory University School of Medicine, Atlanta, GA 30322, USA

⁴Department of Neurosurgery, University of Utah, Salt Lake City, UT 84112, USA

⁵Department of Neurosurgery, Baylor College of Medicine, Houston, TX 77030, USA

⁶Department of Neurology, Columbia University Medical Center, New York, NY 10032, USA

⁷Department of Neurology, Thomas Jefferson University, Philadelphia, PA 19107, USA

⁸Department of Neurosurgery, Thomas Jefferson University, Philadelphia, PA 19107, USA

⁹Department of Radiology, Hospital of the University of Pennsylvania, Philadelphia, PA 19104, USA

¹⁰Lead Contact

*Correspondence: joshua.jacobs@columbia.edu

<https://doi.org/10.1016/j.cub.2019.11.048>

SUMMARY

The hippocampus and surrounding medial-temporal-lobe (MTL) structures are critical for both memory and spatial navigation, but we do not fully understand the neuronal representations used to support these behaviors. Much research has examined how the MTL neurally represents spatial information, such as with “place cells” that represent an animal’s current location or “head-direction cells” that code for an animal’s current heading. In addition to behaviors that require an animal to attend to the current spatial location, navigating to remote destinations is a common part of daily life. To examine the neural basis of these behaviors, we recorded single-neuron activity from neurosurgical patients playing Treasure Hunt, a virtual-reality spatial-memory task. By analyzing how the activity of these neurons related to behavior in Treasure Hunt, we found that the firing rates of many MTL neurons during navigation significantly changed depending on the position of the current spatial target. In addition, we observed neurons whose firing rates during navigation were tuned to specific heading directions in the environment, and others whose activity changed depending on the timing within the trial. By showing that neurons in our task represent remote locations rather than the subject’s own position, our results suggest that the human MTL can represent remote spatial information according to task demands.

INTRODUCTION

The medial temporal lobe (MTL) is critical for memory and spatial navigation [1, 2]. Many electrophysiological studies have focused on characterizing MTL neuronal coding during

navigation; much of this interest in spatial navigation is due to the fact that the neuronal mechanisms underlying spatial coding are thought to relate to those used for memory [3–6]. Place cells, whose firing rates change as a function of an animal’s location in space, are arguably the most well-studied cell type in the MTL [7] and show activity related to navigation and mnemonic processing [4]. Similarly, the MTL contains other neurons that activate according to an animal’s spatial setting, such as grid and head-direction cells [8–10], which could also have broader functional roles [11, 12]. Building off of this literature, a topic of growing interest is whether the types of coding patterns that represent an animal’s own spatial location are also used to represent other kinds of information to support complex behaviors, such as the targeting of remote locations during goal-directed navigation [13, 14].

In addition to thinking about one’s own location, everyday life often involves remote locations—in particular, planning, remembering, and navigating to remote destinations. However, the neuronal representations of remote locations remain less well understood compared to those of an animal’s current location [15]. Beginning to address this, a growing line of studies has examined how MTL neurons represent salient remote locations [16–20]. There is also evidence that certain single neurons and hippocampal blood-oxygen-level-dependent (BOLD) signals activate to represent particular views and goals during navigation to specific fixed navigational goals [21–23]. This diverse literature indicates that the MTL can represent various aspects of an animal’s current spatial context according to behavioral demands.

We wanted to go beyond earlier studies that probed memory for locations marked by visual landmarks (e.g., [4, 18]) and investigate more generally how the human MTL codes for current remote spatial target locations. To examine this issue, we asked neurosurgical patients with microelectrodes implanted in their MTL to play a virtual-reality spatial-memory task, and we examined how their neural responses related to their simultaneous movement. The fifteen participants in our study played Treasure Hunt, a video-game-like memory task that measured subjects’ ability to remember the spatial locations where various objects



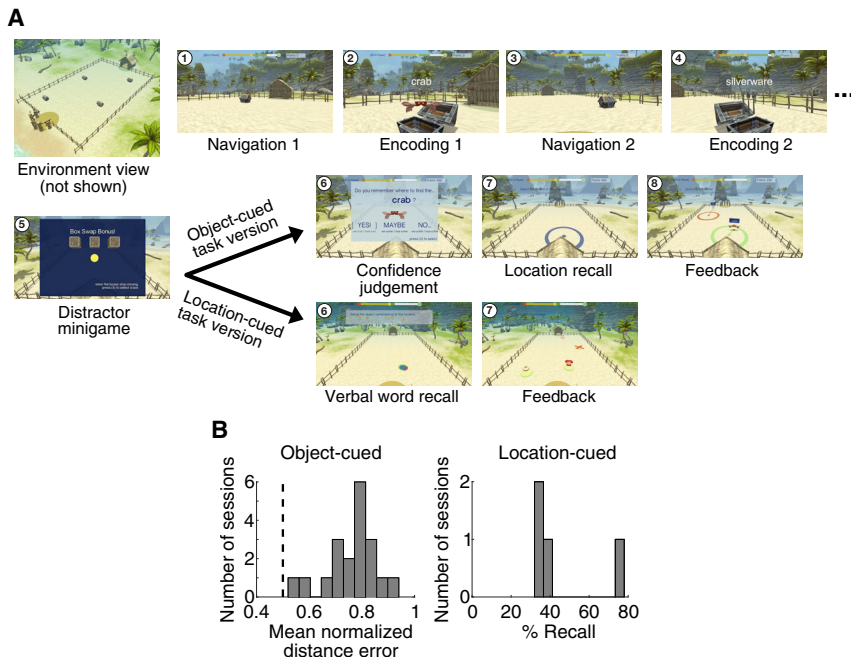


Figure 1. Behavior in the Treasure Hunt Task

(A) Timeline of navigation, encoding, and recall events in Treasure Hunt. Numbered panels indicate the sequence of events that subjects encounter in each trial of the task. The object- and location-cued task versions differ in terms of the recall stage, which is indicated here via the divergence at step 6 in this timeline. See [STAR Methods](#) for details on the structure of the two task versions.

(B) Histogram showing mean performance on the recall phase of Treasure Hunt in each of the two task versions. Left: distribution of mean normalized distance errors across sessions for the object-cued task version. A normalized distance error of 1 corresponds to the best possible response, and 0.5 corresponds to chance performance. Right: distribution of mean percentage of items that were vocalized correctly in the location-cued task version.

See also [Figure S1](#) and [Video S1](#).

were hidden [24]. In each trial of the task, subjects explored a virtual beach and traveled to a series of treasure chests. Upon reaching each chest, it opened and an object appeared. The subject's goal was to encode the spatial location corresponding to the position of each item. In contrast to earlier tasks with human single-neuron recordings that tested memory for fixed spatial landmarks, objects in Treasure Hunt were placed at previously unmarked locations in an open environment, allowing us to identify whether the brain utilizes a neural coding pattern for remote locations that is related to the one used by place cells during movement. Our primary result is identifying "spatial-target cells," which are neurons whose firing rates were modulated according to the location of the remote target, rather than the subject's own location. We also identified neurons that altered their firing rate according to the subject's heading direction, and others whose firing rate was modulated as a function of the timing within each trial. The range of responses we observed—including the representation of remote goals by spatial-target cells—indicate that the human MTL represents multiple types of spatiotemporal context information to support goal-directed spatial processing.

RESULTS

To examine the neural signatures of navigating to and remembering remote destinations, we asked fifteen neurosurgical patients with implanted microelectrodes to play Treasure Hunt, a virtual-reality spatial-memory task. In Treasure Hunt, subjects navigate across a rectangular environment using a handheld joystick and learn the locations of objects hidden at various spatial locations [24]. In each trial of the task subjects encounter two or three trial-unique objects that are positioned at random locations ([STAR Methods](#)). During the task, we recorded the activity of 131 neurons [25] from the hippocampal formation (HF; $n = 45$), entorhinal cortex (EC; $n = 71$), and parahippocampal cortex

or perirhinal cortex (PC; $n = 15$). To identify the neural patterns that support behavior in this task, we tested whether neuronal firing rates during navigation were significantly modulated by the locations of upcoming to-be-remembered objects as well as the subject's current location, heading direction, relative order within the trial, and subsequent memory performance.

Each trial of Treasure Hunt consisted of three phases ([Figure 1A](#); [STAR Methods](#)). First, the subject navigated to a chest ("Navigation"). Upon reaching a chest, it opened and was either empty or revealed an object whose location the subject was instructed to remember ("Encoding"). In a given trial, subjects repeated this for up to four chests. Next, in the "recall" phase subjects were asked to recall the object locations. Each subject in our study performed one of two task versions, which differed solely in terms of the recall phase. In the "object-cued" task version, subjects viewed the image of a cued object and used the joystick to move an on-screen cursor to indicate its remembered location. In the "location-cued" version of the task they viewed a probed location and verbally responded by speaking the name of the corresponding object into a microphone that recorded their response.

Subject Behavior in Treasure Hunt

We assessed task performance by scoring each subject's performance during recall for each object–location pair. For the object-cued task version we assessed accuracy for each studied item by computing the distance between the subject's response location and the item's actual position, and then converting this distance error to an accuracy measure that accounted for all possible distance errors ([STAR Methods](#)). The left panel of [Figure 1B](#) shows a histogram of the mean accuracy, or normalized distance error, in each object-cued task session ($n = 19$ sessions). Mean accuracy across all object-cued sessions was $76.7\% \pm 2.2\%$, and the performance in all individual sessions was above chance (0.5). The recall phase of the

location-cued Treasure Hunt task is similar conceptually to commonly used paired-associate memory tasks. The right panel of [Figure 1B](#) shows a histogram of each location-cued session's mean percent recall ($n = 4$ sessions). The mean performance on location-cued sessions (46%) was consistent with levels seen in other paired-associate memory tasks that required verbal responses (e.g., [\[26\]](#)).

We found that subjects maintain, and in fact slightly improve, memory performance throughout each session. On average, in the object-cued task version subjects' memory performance is 6.6% better in the second half of each session compared to the first half ($p = 0.026$; paired t test), which demonstrates that subjects successfully learn to perform the task better within a single session. We also examined how memory performance varied according to the order of an object-location pair within each trial. [Figure S1F](#) shows the mean recall for presented objects as a function of the position within the trial for all object-cued sessions. There was a significant effect of serial position on memory performance ($p = 0.008$; repeated-measures ANOVA), likely reflecting improved memory for items at primacy and recency positions, consistent with patterns seen in conventional verbal memory tasks [\[27\]](#).

Neurons Responsive to the Current Spatial Target

We were interested in whether neurons represented information about the location of the current, to-be-remembered chest during navigation. We were motivated by previous work in animal models showing MTL cells that represent salient remote locations [\[16–20, 28\]](#), as well as related evidence from recordings of human theta oscillations [\[29\]](#) and functional MRI [\[23\]](#). Therefore, we examined how the firing rates of individual neurons during navigation varied according to the location of the current target chest.

To identify these “spatial-target cells,” we analyzed each cell's spiking activity as a function of the location of the upcoming chest, in addition to the subject's current position ([Figure 2A](#)). We generated spatial maps of each cell's firing patterns, based both on the location of the upcoming spatial target and on the subject's own position. We then identified neurons whose firing rates were significantly modulated by these factors using a permutation procedure based on an ANOVA. We labeled a neuron as a spatial-target cell if its firing rate significantly varied as a function of the upcoming chest location at $p = 0.05$. Because chests had the same appearance and objects were not visible during navigation, spatial target cell firing must reflect information about the spatial location of the upcoming target. As an example of this phenomenon, [Figure 2B](#) illustrates the activity of one example spatial-target cell from the left EC of patient 9. This neuron increased its firing rate when the subject navigated to chests that were located in the “south-central” part of the environment ($p < 0.001$).

Critically, while this example cell's firing rate was modulated by the location of the upcoming chest, its firing rate did not vary significantly according to the subject's own position ([Figure 2B](#), right panel; $p = 0.4$). [Figure 2C](#) shows a second example of this phenomenon from a cell in patient 12's right EC. This cell significantly increased its firing rate when the subject approached spatial targets in the “east” section of the environment ($p = 0.004$) and also did not show a firing-rate modulation

according to the subject's own position ($p = 0.4$). Because the firing of these cells was modulated by the location of the upcoming to-be-remembered target and not the subject's own position, the activity of these neurons constitutes a novel coding pattern that is distinct from the activity of conventional place cells.

To assess the statistical reliability of this phenomenon, we first confirmed that the number of identified spatial-target cells was significantly greater than expected by chance, followed by correcting for multiple comparisons across the five behavioral variables we examined ([STAR Methods](#)). Across the population, 20% of MTL cells (26 of 131) were classified as significant spatial-target cells. This proportion was significantly more than the 5% expected by chance ($p = 8.3 \times 10^{-9}$, one-sided binomial test, false discovery rate [FDR] corrected). The number of spatial-target cells was also significantly above chance when measured separately for the HF, EC, and PC regions (one-sided binomial tests $p = 5 \times 10^{-4}$, 5×10^{-4} , and 6.1×10^{-4} respectively, FDR corrected). We found significant spatial-target cells in 11 of the 15 subjects who participated in our study. The prevalence of spatial-target cells did not significantly differ between task versions (see [Control Analyses](#)).

We next examined the time course of spatial-target cell activity. [Figures S4B–S4D](#) plot the activity of the spatial-target cell from [Figure 2A](#) over time, split by paths to a location in versus out of the cell's firing field. The results of this analysis at the group level ([Figure S4E](#)) show that spatial-target cells exhibit elevated firing throughout navigation periods to chests in their firing field, indicating that the activity of these cells is not related to transient behavioral events at the beginning or end of each navigation epoch. To examine the possibility that spatial-target cells reflected information about the distance to the upcoming target, we tested for distance-related activity during navigation. Six spatial-target cells also showed distance-related activity, but this overlap between the two cell types was not significant ($p = 0.12$, χ^2 test, degrees of freedom [df] = 1). Furthermore, to rule out the possibility that spatial-target cell responses could be explained by navigation time, for each spatial-target cell we compared the durations of the navigation periods leading to chests inside versus outside of the cell's firing fields using a two-sample t test. At the group level, we did not find that path duration for navigation to chests in and out of the spatial-target cells' firing fields differed for a significant proportion of cells (2 of 26, $p = 0.4$, one-sided binomial test). Overall, these results further support our finding that a substantial number of neurons throughout the human MTL specifically represent remote locations in our task.

Analysis of Neuronal Activity Related to the Current Spatial Location

In addition to representing the location of the current chest, an additional potentially relevant spatial variable is the subject's own location during navigation. In light of the extensive literature on spatial coding for self location in various species [\[7, 21\]](#), we tested for neurons in this dataset whose firing rates were modulated by the subject's own position. Using the ANOVA described in the preceding section, we identified the neurons whose firing rates were significantly modulated as a function of the subject's own position. [Figures S3A–S3C](#) show

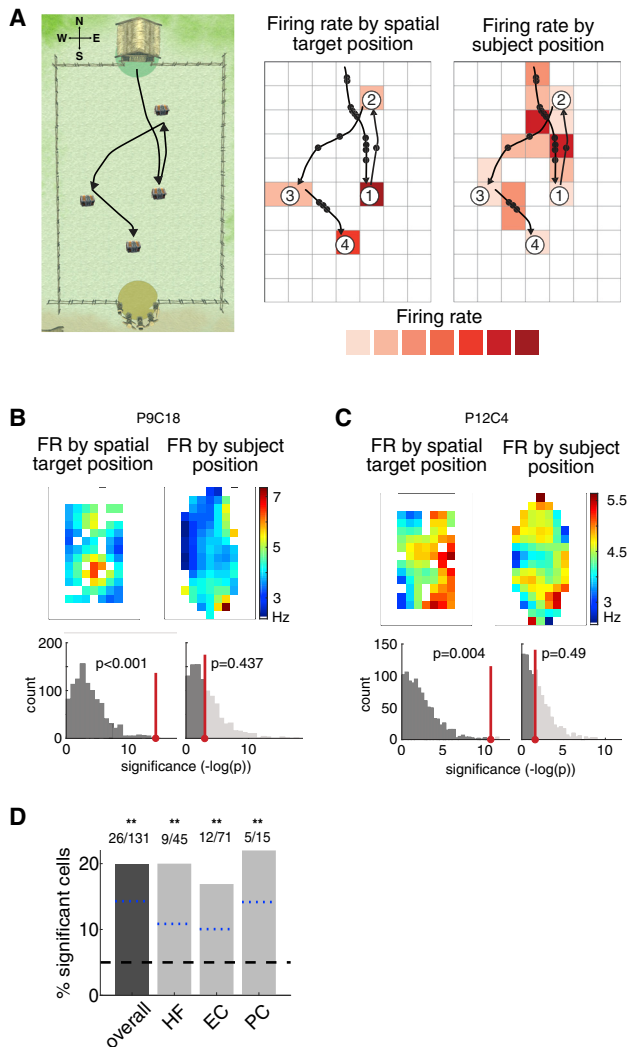


Figure 2. Neural Activity Related to Spatial Target Position

(A) Analysis framework for binning navigation period neuronal data by subject position and spatial target location, shown for an example trial. Left: overhead view of Treasure Hunt environment with example paths to 4 chests (only one chest is visible at a given time). The NESW coordinates we use are shown in the top left. Middle: example path spikes binned by spatial target location to calculate firing rate during navigation based on the chest location. Right: same spikes binned by subject position to calculate firing rate on the path.

(B) Top left: firing-rate map of navigation activity binned by spatial target position for a neuron in the left EC from patient 9. Black line indicates the perimeter of the traversable virtual environment, and areas that didn't meet minimum traverse time requirements as described in the STAR Methods are plotted in white. Bottom left: histogram of p values from ANOVA (STAR Methods) assessing spatial target location modulation of firing rate for the observed data (red) versus shuffled data (gray). This cell's activity is significantly modulated by the spatial target position (permutation-corrected ANOVA, $p < 0.001$). Top right: firing-rate map for current location. Bottom right: histogram of p values from ANOVA assessing current location modulation of firing rate. Neuron is not significantly modulated by subject position ($p = 0.43$).

(C) Same as (B) but for another example neuron in the right EC from patient 12. Neuron is significantly modulated by spatial target position ($p = 0.004$) and not subject position ($p = 0.49$).

(D) Percentage of significant spatial-target cells by region. Shown for all MTL neurons ("overall") and also split into HF, EC, and PC. Symbols above the bars indicate p values from a one-sided binomial test for each proportion, FDR

three example "place-like" cells that showed spatial modulation according to the subject's current virtual location at a level of $p < 0.05$ when measured individually (see also Figure S4F). However, at the population level the proportion of place-like cells was not significantly greater than the 5% expected by chance after multiple comparison correction (8 of 131 = 6%; $p = 0.33$, one-sided binomial test, FDR corrected; Figure S3D). As such, during the navigation phase of Treasure Hunt we do not find strong evidence that the firing rates of individual MTL neurons are correlated with the subject's own location.

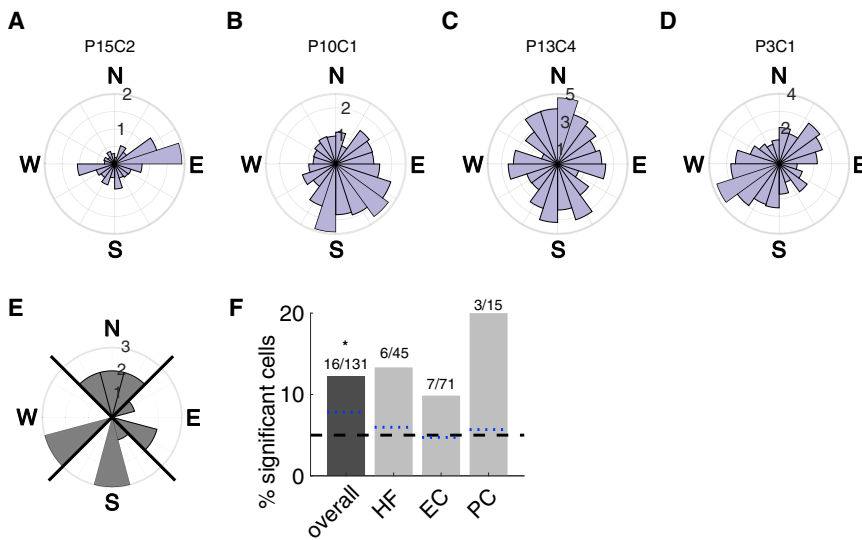
Neurons Responsive to Heading Direction

In rodents, there is evidence for neurons whose firing rates are modulated by the direction of the animal's head during movement [10, 30]. These head-direction cells are commonly found in the dorsal presubiculum and anterodorsal thalamus but have also been found in areas of the MTL such as the EC [31]. These cells have not previously been found in humans, and this gap is notable because a neuronal representation of orientation is important for navigating to a new location in an environment. We therefore tested for the existence of "heading-modulated" cells in our dataset, which we define as neurons that varied their firing rate according to the direction that subjects moved in the virtual environment. Figures 3A–3D illustrate the activity of four significant heading-modulated cells. As these examples illustrate, individual heading-modulated cells showed peak firing activity at differing headings. In addition, some cells showed increased firing rates at multiple distinct headings (Figures 3C and 3D), similar to "bidirectional cells" observed in rodents [32].

Overall, 12% of MTL cells (16 of 131) showed significant heading direction modulation, which is significantly more than expected by chance ($p < 0.0015$, one-sided binomial test, FDR corrected). No heading-modulated cells showed firing that significantly varied with the subject's current position. Three heading-modulated cells showed effects of spatial target position, but this overlap was not significant ($p = 0.9$, χ^2 test). Because the population of heading-modulated cells did not significantly overlap with the population that was significantly modulated by spatial target position, this suggests that spatial-target cells are not explained by direction-related modulations, which could have been possible in theory if similar locations were always approached from a particular direction.

Additionally, we did not find that any particular preferred angle was dominant across the population of heading-modulated cells ($p = 0.97$, Rayleigh test; Figure 3E). This was important because, due to the trial start locations and the rectangular shape of the environment, "north" and "south" directions were sampled more frequently (Figure S1E), which provided a potential source of bias. Because we did not find evidence of a preferred direction for heading-modulated cells, this suggests that our heading-modulated results are not due to uneven directional sampling.

corrected (** $p < 0.01$, * $p < 0.05$, + $p < 0.1$). The black dashed line represents the 5% false positive rate, and the blue dotted lines are the lower 95% confidence interval from the one-sided binomial test for each bar. See also Figure S4.



(F) Percentage of significant heading-modulated cells by region. Symbols above the bars indicate p values from a one-sided binomial test for each proportion (** $p < 0.01$, * $p < 0.05$, + $p < 0.1$). The black dashed line represents the 5% false positive rate, and the blue dotted lines are the lower 95% confidence interval from the one-sided binomial test for each bar.

Neurons Modulated by Serial Position

In addition to space, a growing body of work shows that neurons in the MTL also represent information about event timing during spatial tasks [33–35]. We tested whether MTL neurons in this task represented event timing information by measuring whether neuronal activity during navigation was modulated according to the serial position of each navigation period within each trial.

Subjects navigated to up to four chests in a trial, enabling us to investigate differences in neuronal activity based on the chest order. We analyzed navigation periods based on their serial position and found that the firing rates of 20 of 131 (15%) of MTL cells were significantly modulated by serial position, which is significantly more than expected by chance ($p = 2.18 \times 10^{-5}$, one-sided binomial test, FDR corrected). Figures 4A and 4B show examples of two such “serial-position” cells. We specifically found a significant proportion (23%) of serial-position cells in the EC (Figure 4D; $p = 1.05 \times 10^{-6}$, one-sided binomial test, FDR corrected). Across all cells showing modulation by serial position, there was a preference for these neurons to represent the initial list position (Figure 4C). The set of serial-position cells did not significantly overlap with the spatial-target cells ($p = 0.55$; χ^2 test, $df = 1$). Five serial-position cells were also classified as heading-modulated cells, which is notable but not a statistically significant overlap ($p = 0.058$; χ^2 test, $df = 1$).

Analysis of Neuronal Activity Modulated by Subsequent Memory

Studies in humans with large-scale neural measures such as functional MRI and local field potentials often find that neural activity in the HF during encoding increases in relation to subsequent memory performance [24, 36]. However, little evidence for this finding exists at the single-neuron level for changes in mean firing rates [37]. We therefore tested whether each cell’s firing rate during navigation significantly varied as a function of whether or not the current spatial target was subsequently remembered.

Figure 3. Neural Activity Related to the Subject's Heading

Firing rate by virtual heading direction (N, north; E, east; S, south; W, west), for example cells significantly modulated by heading direction.

(A) Circular histogram of firing rate by heading direction for example cell from patient 15, in the left hippocampus, significantly modulated by heading direction ($p = 0.026$). Firing rate is indicated with numbers on the concentric circles.

(B) Example cell from patient 10, in the left parahippocampal cortex, significantly modulated by heading direction ($p = 0.005$).

(C) Example heading-modulated cell from the left hippocampus of patient 13 ($p = 0.0315$).

(D) Example heading-modulated cell from the left hippocampus of patient 3 ($p = 0.003$).

(E) Circular histogram of preferred heading directions for each significant heading direction cell. Counts indicate number of cells with that preferred direction. Black diagonal lines indicate NESW quadrants.

We found 11 “memory cells,” whose firing rate during navigation significantly varied as a function of whether or not the current spatial target was subsequently remembered (Figures S3E–S3H; 11 of 131 = 8%, $p = 0.081$, one-sided binomial test, FDR corrected). Of the 11 memory-related cells, six demonstrated an increased firing rate related to successful recall, while five showed the opposite effect (Figure S3G). To examine the relationship between memory-related cells and other cell types, we investigated the overlap with other kinds of coding patterns. Three memory-related cells were spatial-target cells, one was a heading-modulated cell, and none were place-like cells. Of the three cells that fulfilled the criteria for both memory and spatial-target cells, one showed a significant interaction between those two factors in a follow-up two-way ANOVA, which is not a significant proportion of cells ($p = 0.19$, one-sided binomial test). Additionally, two serial-position cells showed significant memory-related modulation ($p = 0.89$; χ^2 test, $df = 1$). Based on these analyses, our results do not provide strong evidence for a population of MTL neurons whose mean firing rates during navigation correlate with subsequent memory performance.

Control Analyses

To confirm that our results are statistically robust on the single-cell level, we computed the number of significant cells for each parameter using a stricter p-threshold of $\alpha = 0.01$. Using this threshold, we continue to find significant proportions of MTL cells responding to spatial target position (10 of 131, $p = 2.4 \times 10^{-6}$; one-sided binomial test, FDR corrected), heading direction (5 of 131, $p = 0.013$), and serial position (10 of 131, $p = 2.4 \times 10^{-6}$). We also find a significant proportion of cells modulated by the subjects’ current position with this threshold (5 of 131, $p = 0.013$), and the proportion of memory-related cells remains below chance (1 of 131, $p = 0.73$).

To rule out the possibility that the effects, we observed related to electrodes being located in abnormal brain tissue, we re-calculated our main results excluding neurons that were

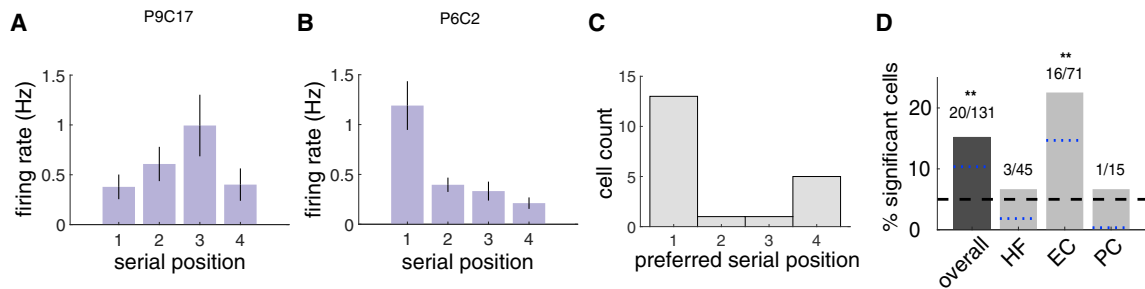


Figure 4. Neural Activity Related to Serial Position

(A) Firing rate by serial position for an example neuron from the left EC of patient 9, significantly modulated by serial position ($p = 0.025$). Error bars are SEM of the trial means in each condition.

(B) Example serial-position cell from the right EC of patient 6; $p < 0.001$. Error bars are SEM of the trial means in each condition.

(C) Histogram of preferred serial position for each significant serial-position cell. Counts indicate number of cells with maximal firing rate in that serial position.

(D) Percentage of significant serial-position cells by region. Symbols above the bars indicate p values from a one-sided binomial test for each proportion (** $p < 0.01$, * $p < 0.05$, + $p < 0.1$). The black dashed line represents the 5% false positive rate, and the blue dotted lines are the lower 95% confidence interval from the one-sided binomial test for each bar.

See also Figure S4.

localized to what was clinically determined to be the seizure onset zone (SOZ). This included 15 units from three subjects (from patients 2, 10, 12), leaving 116 units. Our main findings remained consistent after this exclusion. The proportion of spatial-target cells (23 of 116), heading-modulated cells (14 of 116), and serial-position cells (17 of 116) found in regions outside the SOZ all remained significantly greater than chance ($p = 7 \times 10^{-8}$, $p = 0.0033$, $p = 1.7 \times 10^{-2}$, respectively; one-sided binomial tests, FDR corrected). The proportion of place-like cells (6 of 116) and memory-related cells (9 of 116) remained below chance ($p = 0.53$, $p = 0.16$). Because our conclusions remain the same when excluding the SOZ, we believe that our results are very unlikely to be due to pathological activity.

DISCUSSION

In this study, we found that during a spatial-memory task the firing rates of subjects' MTL neurons were significantly modulated by the locations of spatial targets, heading direction, and serial position. In particular, by showing that human single neurons can represent information about remote spatial positions, these results help explain how contextual information, such as relevant remote locations, is represented by the brain to support goal-directed spatial navigation and cognition.

The spatial-target cells that we identified share some properties with MTL neurons reported in previous human and animal studies. Namely, Ekstrom et al. [21] identified cells in the human MTL that activated during navigation to specific fixed navigational goals ("goal cells"). Broadly, the activity of both goal cells and spatial-target cells could be interpreted as related because they both code for aspects of a subject's current objective during navigation. However, as we describe below, we believe that the distinctive features of our task allowed us to differentiate between spatial-target cells and goal cells in at least three key ways. First, owing to the pseudo-random placement of chests in our task, we were able to determine that spatial-target cell firing is directly linked to specific locations in the virtual environment. In contrast, Ekstrom et al.'s [21] goal cells may respond according to the landmark at a particular location, as opposed

to the location itself (see also Komorowski et al. [38]). Second, spatial-target cells likely support a more location-focused type of goal coding, which we were able to identify due to the greater path variability enabled by our open-field environment. In contrast, it is likely that Ekstrom et al.'s [21] goal cells reflect route-goal conjunctions because their task required that subjects follow stereotyped routes along constrained paths to fixed landmarks, which is correlated with route-goal conjunctive representations in rodents [39, 40]. Third, there is substantial evidence that spatial tuning and hippocampal activity differ dramatically according to task type [41] and memory state [42], and, specifically, between memory and navigation states [24]. Since our task differed from Ekstrom et al.'s [21] in all three aspects by requiring memory encoding, it is likely that spatial-target cells reflected a distinct kind of goal coding compared to Ekstrom et al.'s [21] goal cells, which showed this pattern during navigation.

Ekstrom et al. [21] also identified "view cells," which, along with the "spatial view cells" identified by Rolls in nonhuman primates [16], are neurons that fire in response to a subject viewing specific objects or locations. However, both of these cell types differ in important ways compared to the spatial-target cells we report. Whereas Ekstrom et al.'s [21] view cells respond to a visual stimulus's presence anywhere on the screen, the spatial-target cells we describe instead activate according to the precise location of the to-be-remembered target in the spatial environment. Further, Rolls' spatial-view cells differ from our results by reflecting a different kind of spatial representational scheme. Spatial-view cells showed increased activity when the animal viewed locations in the context of a particular 2D scene (usually spots on the wall of a room). In contrast, because our task allowed subjects to approach individual target locations from drastically different headings, we were able to conclude that the activity of spatial-target cells reflected navigable locations within open 3D space, irrespective of the background scene. Nonetheless, despite these substantial apparent differences between our results and the earlier findings, it remains possible that there are important links between all these cell types. Understanding the representational

similarities across these cell types is an interesting area of future work that could be accomplished with specifically targeted behavioral tasks.

Other studies have also shown MTL place-like cells whose firing patterns are modulated by information related to the current navigational goal [18, 22, 43, 44], which is conceptually related to our finding of human spatial-target cells. However, the results from those studies differ significantly from ours because they show goal-related neural activity that appeared only at particular locations along a track, which were often near choice points or goal locations. Broadly, this is an important difference because spatial-target cells seem to be involved in continuous encoding of the target location, while the goal-related place cells described above are likely involved in context-based decision making en route to goals.

In addition to identifying neurons that activate for remote target locations, our finding of heading-modulated cells provides perhaps the first evidence of this cell type in humans (see also Jacobs et al. [45]). Head-direction cells have been described extensively in rodents and are most frequently found in areas such as the postsubiculum, retrosplenial cortex, and anterodorsal thalamus [10, 30, 46]. However, they have also been found in the hippocampus and EC [31, 47]. In addition to the cells we found that respond most to movement in a single direction, we also found evidence of cells with bidirectional responses, which are similar to patterns reported recently in rodents [32]. Additionally, although none of the heading-modulated cells we report were localized to the subiculum, the bidirectional heading-modulated cells also bear similarities to the subiculum cells described in Olson et al. [48] that were tuned to opposing directions. An interesting area of future work will be to determine the degree to which these cells are similar, especially given the differences in the navigational setting between our task and those in the other studies.

Finally, it is notable that we also found neurons that activated to represent particular serial positions during each trial and that these cells were prominent in the EC. Because this population of neurons showing “serial-position” effects did not significantly overlap with the neurons showing “spatial target” or memory effects, it suggests that these phenomena reflect distinct neural processes. An interesting area for future work is identifying the extent to which serial-position cells are relevant for understanding other aspects of memory. The localization of serial-position cells to the EC aligns with recent work in rodents and human fMRI that identified a specific role for the EC in supporting the neural encoding of time through an experience [35, 49]. Further, serial-position cells most often showed increased activity during navigation periods at the beginning of each trial (Figure 4C), which is notable because EC time cells also show distinctive responses at early moments in a sequence. This correspondence suggests that these responses may be related [35, 50].

The nature of MTL spatial coding can vary with task demands (e.g., Aronov et al. [51]). We believe the lack of observed place cells in our dataset may be related to the behavioral demands of our task. In our experiment, subjects tried to remember the positions of objects that had been placed at locations in an open environment that were subsequently unmarked. On each trial of our task, new, previously unmarked locations become salient and relevant for memory encoding. This may have led

to greater attentional focus to those upcoming locations during navigation instead of the subject’s current location. This focus on remote locations during navigation is a substantial difference between our task and many previous neural studies of human spatial navigation (e.g., Jacobs et al. [9]), and we hypothesize that this feature of our task may have been important for eliciting the activity of spatial-target cells. An interesting direction for future research will be to determine the degree to which the activity of task-related neurons is modulated according to current task demands. This would require a task in which the relevant behavioral factors, such as the type of memory content to be encoded or retrieved, is changed across trials while the same neurons are recorded. This kind of experiment could show whether individual MTL neurons alter the nature of their information coding depending on the features of the environment or current behavioral demands.

Our results extend the prior literature by demonstrating that MTL neurons are engaged during the encoding of remote spatial locations in allocentric space. We also find coding of heading direction and timing within each trial. A key direction for future work in this area is understanding the degree to which the activities of these cell types are maintained across different behavioral settings. Systematically characterizing the activity patterns of these neurons across behaviors can be challenging, especially in clinical recording environments. To this end, it will likely be useful to utilize more advanced measures of behavior, such as incorporating eye tracking and using tasks with multiple conditions that distinguish neural signals related to memory and other behaviors. An additional important direction going forward is to identify links between the multiple different types of neurons that represent task-relevant information in a given setting, such as by identifying relations between place and spatial-target cells. Identifying these links could open directions for future research on what causes these representational schemes to change and show how the brain links the representations of related memories.

STAR★METHODS

Detailed methods are provided in the online version of this paper and include the following:

- KEY RESOURCES TABLE
- LEAD CONTACT AND MATERIALS AVAILABILITY
- EXPERIMENTAL MODEL AND SUBJECT DETAILS
- METHOD DETAILS
 - Experimental Task
 - Single-neuron recordings
 - Electrode localization
 - Single-unit waveform classification
- QUANTIFICATION AND STATISTICAL ANALYSIS
 - Analysis of behavior
 - Analysis of neural data
- DATA AND CODE AVAILABILITY

SUPPLEMENTAL INFORMATION

Supplemental Information can be found online at <https://doi.org/10.1016/j.cub.2019.11.048>.

ACKNOWLEDGMENTS

We are grateful to the patients for participating in our study. We thank Sang Ah Lee and Shachar Maidenbaum and Ansh Patel for providing helpful feedback on the manuscript. This work was supported by NIH grants R01-MH061975, R01-MH104606, S10-OD018211, and T32-NS064928 and the National Science Foundation.

AUTHOR CONTRIBUTIONS

M.T., J.M., S.E.Q., and J.J. designed the study. M.T., S.E.Q., C.S.I., R.E.G., J.T.W., E.H.S., S.A.S., C.A.S., M.R.S., A.S., and J.M.S. were involved in data collection. M.T. performed the data analyses. M.T. and J.J. wrote the paper. All authors participated in editing and approved the final document.

DECLARATION OF INTERESTS

The authors declare no competing interests.

Received: January 16, 2019

Revised: October 10, 2019

Accepted: November 15, 2019

Published: January 2, 2020

REFERENCES

- Scoville, W.B., and Milner, B. (1957). Loss of recent memory after bilateral hippocampal lesions. *J. Neurol. Neurosurg. Psychiatry* 20, 11–21.
- Morris, R.G.M., Garrud, P., Rawlins, J.N., and O'Keefe, J. (1982). Place navigation impaired in rats with hippocampal lesions. *Nature* 297, 681–683.
- Eichenbaum, H. (2017). The role of the hippocampus in navigation is memory. *J. Neurophysiol.* 117, 1785–1796.
- Miller, J.F., Neufang, M., Solway, A., Brandt, A., Trippel, M., Mader, I., Hefft, S., Merkow, M., Polyn, S.M., Jacobs, J., et al. (2013). Neural activity in human hippocampal formation reveals the spatial context of retrieved memories. *Science* 342, 1111–1114.
- Schiller, D., Eichenbaum, H., Buffalo, E.A., Davachi, L., Foster, D.J., Leutgeb, S., and Ranganath, C. (2015). Foster, Stefan Leutgeb, and Charan Ranganath. Memory and space: towards an understanding of the cognitive map. *J. Neurosci.* 35, 13904–13911.
- Epstein, R.A., Patai, E.Z., Julian, J.B., and Spiers, H.J. (2017). The cognitive map in humans: spatial navigation and beyond. *Nat. Neurosci.* 20, 1504.
- O'Keefe, J., and Dostrovsky, J. (1971). The hippocampus as a spatial map. Preliminary evidence from unit activity in the freely-moving rat. *Brain Res.* 34, 171–175.
- Hafting, T., Fyhn, M., Molden, S., Moser, M.B., and Moser, E.I. (2005). Microstructure of a spatial map in the entorhinal cortex. *Nature* 436, 801–806.
- Jacobs, J., Weidemann, C.T., Miller, J.F., Solway, A., Burke, J.F., Wei, X., Suthana, N., Sperling, M.R., Sharan, A.D., Fried, I., et al. (2013). Direct recordings of grid-like neuronal activity in human spatial navigation. *Nat. Neurosci.* 16, 1188–1190.
- Taube, J.S., Muller, R.U., and Ranck, J.B., Jr. (1990). Head-direction cells recorded from the postsubiculum in freely moving rats. I. Description and quantitative analysis. *J. Neurosci.* 10, 420–435.
- Bellmund, J.L.S., Deuker, L., Navarro Schröder, T., and Doeller, C.F. (2016). Grid-cell representations in mental simulation. *eLife* 5, 17089.
- Horner, A.J., Bisby, J.A., Zotow, E., Bush, D., and Burgess, N. (2016). Grid-like processing of imagined navigation. *Curr. Biol.* 26, 842–847.
- Pfeiffer, B.E., and Foster, D.J. (2013). Hippocampal place-cell sequences depict future paths to remembered goals. *Nature* 497, 74–79.
- Vass, L.K., Copara, M.S., Seyal, M., Shahlaie, K., Farias, S.T., Shen, P.Y., and Ekstrom, A.D. (2016). Oscillations go the distance: low-frequency human hippocampal oscillations code spatial distance in the absence of sensory cues during teleportation. *Neuron* 89, 1180–1186.
- Spiers, H.J., and Maguire, E.A. (2007). The neuroscience of remote spatial memory: a tale of two cities. *Neuroscience* 149, 7–27.
- Rolls, E.T., and O'Mara, S.M. (1995). View-responsive neurons in the primate hippocampal complex. *Hippocampus* 5, 409–424.
- Wilming, N., König, P., König, S., and Buffalo, E.A. (2018). Entorhinal cortex receptive fields are modulated by spatial attention, even without movement. *eLife* 7, e31745.
- Wirth, S., Baraduc, P., Planté, A., Pinède, S., and Duhamel, J.R. (2017). Gaze-informed, task-situated representation of space in primate hippocampus during virtual navigation. *PLoS Biol.* 15, e2001045.
- Omer, D.B., Maimon, S.R., Las, L., and Ulanovsky, N. (2018). Social place-cells in the bat hippocampus. *Science* 359, 218–224.
- Danjo, T., Toyozumi, T., and Fujisawa, S. (2018). Spatial representations of self and other in the hippocampus. *Science* 359, 213–218.
- Ekstrom, A.D., Kahana, M.J., Caplan, J.B., Fields, T.A., Isham, E.A., Newman, E.L., and Fried, I. (2003). Cellular networks underlying human spatial navigation. *Nature* 425, 184–188.
- Ainge, J.A., Tamosiunaite, M., Woergoetter, F., and Dudchenko, P.A. (2007). Hippocampal CA1 place cells encode intended destination on a maze with multiple choice points. *J. Neurosci.* 27, 9769–9779.
- Brown, T.I., Carr, V.A., LaRocque, K.F., Favila, S.E., Gordon, A.M., Bowles, B., Bailenson, J.N., and Wagner, A.D. (2016). Prospective representation of navigational goals in the human hippocampus. *Science* 352, 1323–1326.
- Miller, J., Watrous, A.J., Tsitsiklis, M., Lee, S.A., Sheth, S.A., Schevon, C.A., Smith, E.H., Sperling, M.R., Sharan, A., Asadi-Pooya, A.A., et al. (2018). Lateralized hippocampal oscillations underlie distinct aspects of human spatial memory and navigation. *Nat. Commun.* 9, 2423.
- Fried, I., Wilson, C.L., Maidment, N.T., Engel, J., Jr., Behnke, E., Fields, T.A., MacDonald, K.A., Morrow, J.W., and Ackerson, L. (1999). Cerebral microdialysis combined with single-neuron and electroencephalographic recording in neurosurgical patients. Technical note. *J. Neurosurg.* 91, 697–705.
- Greenberg, J.A., Burke, J.F., Haque, R., Kahana, M.J., and Zaghoul, K.A. (2015). Decreases in theta and increases in high frequency activity underlie associative memory encoding. *NeuroImage* 114, 257–263.
- Kahana, M.J. (2012). *Foundations of Human Memory* (Oxford University Press).
- Gauthier, J.L., and Tank, D.W. (2018). A dedicated population for reward coding in the hippocampus. *Neuron* 99, 179–193.
- Lee, S.A., Miller, J.F., Watrous, A.J., Sperling, M.R., Sharan, A., Worrell, G.A., Berry, B.M., Aronson, J.P., Davis, K.A., Gross, R.E., et al. (2018). Electrophysiological signatures of spatial boundaries in the human subiculum. *J. Neurosci.* 38, 3265–3272.
- Robertson, R.G., Rolls, E.T., Georges-François, P., and Panzeri, S. (1999). Head direction cells in the primate pre-subiculum. *Hippocampus* 9, 206–219.
- Sargolini, F., Fyhn, M., Hafting, T., McNaughton, B.L., Witter, M.P., Moser, M.B., and Moser, E.I. (2006). Conjunctive representation of position, direction, and velocity in entorhinal cortex. *Science* 312, 758–762.
- Jacob, P.Y., Casali, G., Spieser, L., Page, H., Overington, D., and Jeffery, K. (2017). An independent, landmark-dominated head-direction signal in dysgranular retrosplenial cortex. *Nat. Neurosci.* 20, 173–175.
- MacDonald, C.J., Lepage, K.Q., Eden, U.T., and Eichenbaum, H. (2011). Hippocampal “time cells” bridge the gap in memory for discontinuous events. *Neuron* 71, 737–749.
- Heys, J.G., and Dombeck, D.A. (2018). Evidence for a subcircuit in medial entorhinal cortex representing elapsed time during immobility. *Nat. Neurosci.* 21, 1574–1582.
- Tsao, A., Sugar, J., Lu, L., Wang, C., Knierim, J.J., Moser, M.B., and Moser, E.I. (2018). Integrating time from experience in the lateral entorhinal cortex. *Nature* 561, 57–62.

36. Schacter, D.L., and Wagner, A.D. (1999). Medial temporal lobe activations in fMRI and PET studies of episodic encoding and retrieval. *Hippocampus* 9, 7–24.
37. Rutishauser, U., Ross, I.B., Mamelak, A.N., and Schuman, E.M. (2010). Human memory strength is predicted by theta-frequency phase-locking of single neurons. *Nature* 464, 903–907.
38. Komorowski, R.W., Manns, J.R., and Eichenbaum, H. (2009). Robust conjunctive item-place coding by hippocampal neurons parallels learning what happens where. *J. Neurosci.* 29, 9918–9929.
39. Kobayashi, T., Tran, A.H., Nishijo, H., Ono, T., and Matsumoto, G. (2003). Contribution of hippocampal place cell activity to learning and formation of goal-directed navigation in rats. *Neuroscience* 117, 1025–1035.
40. Grieves, R.M., Wood, E.R., and Dudchenko, P.A. (2016). Place cells on a maze encode routes rather than destinations. *eLife* 5, e15986.
41. Markus, E.J., Qin, Y.L., Leonard, B., Skaggs, W.E., McNaughton, B.L., and Barnes, C.A. (1995). Interactions between location and task affect the spatial and directional firing of hippocampal neurons. *J. Neurosci.* 15, 7079–7094.
42. Wood, E.R., Dudchenko, P.A., Robitsek, R.J., and Eichenbaum, H. (2000). Hippocampal neurons encode information about different types of memory episodes occurring in the same location. *Neuron* 27, 623–633.
43. Frank, L.M., Brown, E.N., and Wilson, M. (2000). Trajectory encoding in the hippocampus and entorhinal cortex. *Neuron* 27, 169–178.
44. Ferbinteanu, J., and Shapiro, M.L. (2003). Prospective and retrospective memory coding in the hippocampus. *Neuron* 40, 1227–1239.
45. Jacobs, J., Kahana, M.J., Ekstrom, A.D., Mollison, M.V., and Fried, I. (2010). A sense of direction in human entorhinal cortex. *Proc. Natl. Acad. Sci. USA* 107, 6487–6492.
46. Taube, J.S. (1998). Head direction cells and the neurophysiological basis for a sense of direction. *Prog. Neurobiol.* 55, 225–256.
47. Leutgeb, S., Ragozzino, K.E., and Mizumori, S.J.Y. (2000). Convergence of head direction and place information in the CA1 region of hippocampus. *Neuroscience* 100, 11–19.
48. Olson, J.M., Tongprasearth, K., and Nitz, D.A. (2017). Subiculum neurons map the current axis of travel. *Nat. Neurosci.* 20, 170–172.
49. Montchal, M.E., Reagh, Z.M., and Yassa, M.A. (2019). Precise temporal memories are supported by the lateral entorhinal cortex in humans. *Nat. Neurosci.* 22, 284.
50. Bright, I.M., Meister, M.L.R., Cruzado, N.A., Tiganj, Z., Howard, M.C., and Buffalo, E.A. (2019). A temporal record of the past with a spectrum of time constants in the monkey entorhinal cortex. *bioRxiv*. <https://doi.org/10.1101/688341>.
51. Aronov, D., Nevers, R., and Tank, D.W. (2017). Mapping of a non-spatial dimension by the hippocampal-entorhinal circuit. *Nature* 543, 719–722.
52. Niediek, J., Boström, J., Elger, C.E., and Mormann, F. (2016). Reliable analysis of single-unit recordings from the human brain under noisy conditions: tracking neurons over hours. *PLoS ONE* 11, e0166598.
53. Yushkevich, P.A., Pluta, J.B., Wang, H., Xie, L., Ding, S.L., Gertje, E.C., Mancuso, L., Kliot, D., Das, S.R., and Wolk, D.A. (2015). Automated volumetry and regional thickness analysis of hippocampal subfields and medial temporal cortical structures in mild cognitive impairment. *Hum. Brain Mapp.* 36, 258–287.
54. Avants, B.B., Epstein, C.L., Grossman, M., and Gee, J.C. (2008). Symmetric diffeomorphic image registration with cross-correlation: evaluating automated labeling of elderly and neurodegenerative brain. *Med. Image Anal.* 12, 26–41.
55. Maidenbaum, S., Patel, A., Stein, E., and Jacobs, J. (2019). Spatial memory rehabilitation in virtual reality—extending findings from epilepsy patients to the general population. *Proceedings of the 13th International Conference on Virtual Rehabilitation*.
56. Maidenbaum, S., Patel, A., Garlin, I., and Jacobs, J. Studying spatial memory in augmented and virtual reality. *bioRxiv*, doi: 10.1101/777946.
57. Misra, A., Burke, J.F., Ramayya, A.G., Jacobs, J., Sperling, M.R., Moxon, K.A., Kahana, M.J., Evans, J.J., and Sharan, A.D. (2014). Methods for implantation of micro-wire bundles and optimization of single/multi-unit recordings from human mesial temporal lobe. *J. Neural Eng.* 11, 026013.
58. Jacobs, J., Miller, J., Lee, S.A., Coffey, T., Watrous, A.J., Sperling, M.R., Sharan, A., Worrell, G., Berry, B., Lega, B., et al. (2016). Direct electrical stimulation of the human entorhinal region and hippocampus impairs memory. *Neuron* 92, 983–990.
59. Valdex, A.B., Hickman, E.N., Treiman, D.M., Smith, K.A., and Steinmetz, P.N. (2013). A statistical method for predicting seizure onset zones from human single-neuron recordings. *J. Neural Eng.* 10, 016001.
60. Hill, D.N., Mehta, S.B., and Kleinfeld, D. (2011). Quality metrics to accompany spike sorting of extracellular signals. *J. Neurosci.* 31, 8699–8705.
61. Miller, J.F., Fried, I., Suthana, N., and Jacobs, J. (2015). Repeating spatial activations in human entorhinal cortex. *Curr. Biol.* 25, 1080–1085.
62. Hardcastle, K., Maheswaranathan, N., Ganguli, S., and Giocomo, L.M. (2017). Giocomo. A multiplexed, heterogeneous, and adaptive code for navigation in medial entorhinal cortex. *Neuron* 94, 375–387.
63. Stefanini, F., Mazen A Kheirbek, L.K., and Jessica, C. (2019). A distributed neural code in the dentate gyrus and ca1. *bioRxiv*. <https://doi.org/10.1101/292953>.
64. Benjamini, Y., and Hochberg, Y. (1995). Controlling the false discovery rate: a practical and powerful approach to multiple testing. *J. R. Stat. Soc. B* 57, 289–300.

STAR★METHODS

KEY RESOURCES TABLE

REAGENT or RESOURCE	SOURCE	IDENTIFIER
Software and Algorithms		
MATLAB R2016b	MathWorks	https://www.mathworks.com/
Python 2.7	Python	https://www.python.org/
Combinato spike sorting software	[52]	https://github.com/jniediek/combinato
Automatic Segmentation of Hippocampal Subfields (ASHS)	[53]	https://sites.google.com/site/hipposubfields/
Advanced Normalization Tools (ANTs)	[54]	http://stnava.github.io/ANTs/
Custom MATLAB and Python scripts	This paper	Request from Lead Contact
Other		
Behnke-Fried depth electrodes	AD-TECH Medical Instrument Corp.	https://adtechmedical.com/depth-electrodes

LEAD CONTACT AND MATERIALS AVAILABILITY

Further information and requests for resources and reagents should be directed to and will be fulfilled by the Lead Contact, Joshua Jacobs (joshua.jacobs@columbia.edu). This study did not generate new unique reagents.

EXPERIMENTAL MODEL AND SUBJECT DETAILS

Fifteen patients (10 male, mean age = 32 years, minimum age = 20 years) with medication-resistant epilepsy participated in a total of 23 sessions of our task. These subjects were all undergoing a surgical procedure in which depth electrodes were implanted to localize epileptogenic regions. All patients provided informed consent, and electrode placements were determined solely by the clinical team.

METHOD DETAILS

Experimental Task

The subjects in our study were neurosurgical patients who volunteered to perform our spatial-memory task, Treasure Hunt, in free time between clinical procedures. Treasure Hunt is a 3D virtual spatial-memory paradigm developed in Unity3D, which we previously used to study various aspects of human spatial memory and electrophysiology [24, 55, 56].

Subjects played Treasure Hunt on a bedside laptop computer and controlled their movement through the virtual environment with a handheld joystick. Each patient performed one of two versions of Treasure Hunt (referred to as 'object-cued' and 'location-cued' in Figure 1A). (For more details on this task version, see Miller et al. [24].) We included data from both task versions to increase statistical power, but our conclusions remain robust when only the object-cued data are examined (see Analysis of behavior below). In each trial of Treasure Hunt subjects explored a rectangular arena on a virtual beach (dimensions 100 × 70 virtual units) to reach treasure chests that revealed hidden objects, with the goal of encoding the location of each encountered item. The locations of the objects changed across trials, but the environment's shape, size, and appearance remained constant across the sessions. The task environment was constructed so that the subject would perceive one virtual unit as corresponding to approximately 1 foot in the real world. Subjects viewed the environment from the perspective of biking through the environment and the elevation of their perspective was 5.6 virtual units. As shown in Figure S1A, each end of the environment has unique visual cues to help subjects orient. One end of the environment has a beach hut with trees, and the other contains totem poles and a view of the ocean. See Video S1 for more details on the appearance of the environment.

Each trial of the object-cued task begins with the subject being placed on the ground at a randomly selected end of the environment. The subject then navigates to a chest (i.e., the Navigation phase) using a joystick. (Due to the randomized start locations across trials, the direction of joystick movements are uncorrelated with particular headings in the virtual environment.) Upon arrival at the chest, the chest opens and either reveals an object, which the subject should try to remember, or is empty. The subject remains facing the open chest for 1.5 s (Encoding phase) and then the object and chest disappear, which indicates that the subject should navigate to the next chest that has now appeared in the arena. In each trial the subject navigates to a sequence of four chests. Subjects visit four chests per trial. Two or three (randomly selected) of the chests contain an object and the others are empty. In each session, across 40 trials, subjects visit a total of 100 full chests and 60 empty chests. Chests are located pseudo-randomly across the interior of the environment, subject to the constraints that no chest can be placed within 11 virtual units from another and that all

chests must be at least 13 virtual units from the arena's boundary. This 11-virtual-unit restriction ensures that chest locations are varied in a trial and is the cause of the small dip in the center of the occupancy map in [Figures S1B–S1D](#). There are no constraints based on previous trials, and all object identities are trial-unique and never repeated within a session.

After reaching all four chests of a trial, subjects are transported automatically so that they view the environment from a raised perspective (31 virtual units above ground) at a randomly selected end of the environment. They then perform a distractor task, a computerized version of the “shell game,” before entering the Recall phase. During Recall, subjects are cued with each of the objects from the trial in a random sequence and asked to recall the object's location. In each recall period, they first indicate their confidence for remembering the object's location (“high,” “medium,” or “low”). Next, they indicate the object's precise location by placing a cross-hair at the location in the environment that corresponds to the location of the cued item. After indicating the location of each object from the trial, the Feedback stage of each trial begins. Here, subjects are shown their response for each cued object in the trial, via a green circle if the location was correct and a red circle if it was incorrect. Subjects receive feedback on their performance, following a point system where they receive greater rewards for accurate responses. A response is considered correct if it is within 13 virtual units of the true object location—notably, this is a different threshold than the one we use when analyzing subject behavior, described below.

The location-cued task version is similar to the object-cued task, except that subjects respond differently during the Recall phase ([Figure 1A](#)). During the Recall phase of the location-cued task, subjects are placed in the same elevated view as in the object-cued version, and view a location cue (a white circle on the floor of the environment). They are asked to respond by verbally recalling the name of the object that was positioned at that location. Each session of this task version consists of 30 trials, each with 3 or 4 chests, for a total of 105 chests per session. None of the chests are empty. During the Recall phase subjects are probed with 4 or 5 locations, one of which is a lure location that does not match the location of any of the trial's objects. After the Recall phase is complete, subjects receive feedback on their response accuracy. Here, as they view the environment, each object's actual location is marked with a circle. Each circle's color indicates whether the subject responded correctly (green) or incorrectly (red). Given our primary interest in characterizing neuronal activity during navigation, we conducted our analyses on pooled data from both task versions as they differed only in the Recall phase. An interested reader should see [\[24\]](#) for information on neural activity during the encoding phase.

Single-neuron recordings

We conducted intracranial recordings at three sites (Columbia University Medical Center, Emory University School of Medicine, Thomas Jefferson University). All patients were implanted with Behnke–Fried microelectrodes with 9 platinum–iridium microwires (40 μm) extending from the macroelectrode tip, following previously reported methods [\[25, 57\]](#). The microwire data were recorded at 30 kHz using NeuroPort recording systems (Blackrock Microsystems, Salt Lake City, UT). Across sessions we successfully isolated 131 putative neurons from microelectrodes in the medial temporal lobe (MTL). Forty-five neurons were in the hippocampus and subiculum (HF), 71 were in the EC, and 15 were in parahippocampal or perirhinal cortex (PC) ([Table S1](#)).

Electrode localization

Microwire bundle localization followed previously validated protocols [\[29, 58\]](#). We determined the anatomical location of each microwire electrode bundle by co-registering the pre-surgical T1-weighted (whole brain coverage, 3D acquisition, 1mm isotropic resolution) and T2-weighted (temporal lobe coverage, coronal turbo-spin-echo acquisition, 0.4 \times 0.4 \times 2 mm resolution) structural MRIs to the post-surgical CT scan using Advanced Normalization Tools [\[54\]](#). MTL subregions were automatically labeled using a multi-atlas segmentation technique on the T2-weighted MRI [\[53\]](#). Electrode contact coordinates were then mapped to MRI space and a neuroradiologist (JMS) manually determined the anatomical locations of the microwire electrodes based on the co-registered images. See [Figures S2A–S2D](#) for an example of the images used to localize microwires.

Single-unit waveform classification

We identified neuronal action potentials using the Combinato cluster cutting package [\[52\]](#). Following automatic cluster detection, we manually examined and sorted all clusters. We only included neurons in our analyses after manually inspecting all spike waveforms. This allowed us to visually confirm that all spike waveforms had amplitudes above the noise threshold, physiological-looking waveform shapes, and stationary mean spiking rates throughout each session. Additionally, we only included units for which more than 95% of spikes had an interspike interval of at least 3 ms, following the criteria from Valdez et al. [\[59\]](#). We classified any cluster as a single unit if its distribution of spike waveform shape fulfilled the criteria from Hill et al. [\[60\]](#).

We were mainly interested in single-unit activity in this study, and as such we were conservative in our cluster cutting, resulting in 126 of the units being classified as single units and only 5 of the accepted units were classified as multiunits (due to not fulfilling the waveform shape criteria). Across the 131 units the mean percentage of ISIs <3ms was 0.27%, with a SEM of 0.03%. [Figure S2E](#) shows the waveform of an example unit from patient 15. For this unit, 0.31% of the ISIs were within 3ms ([Figure S2F](#)), and 1.4% of spikes were above the amplitude cutoff ([Figure S2G](#)).

QUANTIFICATION AND STATISTICAL ANALYSIS

Analysis of behavior

We assessed performance on the object-cued task as in earlier work [24]. For each response, we defined the distance error as the Euclidean distance between the subject's response and the correct location. We report 'accuracy' as 1 minus the percentile rank of the actual distance error computed relative to the distribution of all possible distance errors that could have been made for the object's location. This results in an accuracy measure ranging between 0 and 1. Here, 0 indicates a response at the farthest point in the arena from the object's actual location and 1 indicates a response that was positioned exactly at the object's actual location. We used this normalized metric instead of raw Euclidean distance to separate subjects' performance from random guessing, since it accounts for the shape environment and range of possible errors for each response location. Owing to this normalization, random guessing would result in a value of 0.5 on average. We considered the response for one item-location to be correct if its accuracy was above the subject's median accuracy in the session, and incorrectly recalled if it was below that threshold. Performance on the location-cued task was scored by an experimenter who listened to each recorded audio file and manually reported if the spoken word correctly matched the identity of the corresponding memory cue. In the sessions analyzed, subjects never responded with synonyms.

As mentioned above, we pooled the data from the two task versions because during the encoding portion of the tasks, which was the focus of this paper, subjects had similar behavioral performance. To confirm that our neural results were not due to pooling the data, we re-performed our analyses including only the object-cued data. We found that spatial-target (19 of 101), heading-modulated (11 of 101), and serial position (18 of 101) cells all remain significant when calculated for this subset of the data ($p = 2.6 \times 10^{-6}$, $p = 0.02$, $p = 6.5 \times 10^{-6}$, respectively; one-sided binomial tests, FDR-corrected). Additionally, in this subset of the data there were 7/101 place-like cells and 10/101 memory-related cells ($p = 0.24$, $p = 0.038$, respectively).

Analysis of neural data

Our neural data analyses focused on signals from the navigation periods of each session. We first binned the rectangular environment into a 5×7 grid and then computed the grid bin that corresponded to the subject and target locations for each navigation epoch. This 5×7 grid provided a level of aggregation for the data from each session, as each grid bin contained data from 10 ± 4 independent chest viewing events (Figures S1B–S1D). The spatial target and subject position fell into the same grid location in only $9.5 \pm 0.39\%$ (mean \pm SEM) of time points across the dataset.

Next, we measured spatial patterns of neural activity by comparing signals across bins. For the data from a grid bin to be included in the analysis, the subject must have occupied that location for a minimum of 5 s or 2 s when binning by subject position or spatial target position, respectively. We discretized the behavioral navigation data into 100-ms epochs, and for each one calculated the average x- and y-coordinates and bins for the subject's location and for the current target chest. We excluded navigation epochs when subjects were still for more than 500 ms. We binned the spike data into matching 100-ms epochs and then calculated the mean firing rates. We smoothed the firing rate maps for visualization purposes by binning into a 11×16 grid, applying a Gaussian filter with a 1.1-bin SD, and excluding any grid bins with less than 100 ms of occupancy.

We used an ANOVA to identify cells whose firing rates were spatially modulated, as in earlier work [21, 61]. In this ANOVA, the dependent variable was the firing rate of an individual cell in each epoch and the independent variables were the labels of the grid bins corresponding to the subject and target locations. We chose this analysis because it could identify spatial modulation while being agnostic to the size or shape of firing fields and because it could accommodate cells with both high and low baseline firing rates. We felt this flexibility was useful because human place cells sometimes have larger and more complex firing fields compared to neurons recorded in rodents. Further, there is evidence that neurons with complex spatial tuning patterns nonetheless can be used to decode navigationally relevant information that might otherwise be overlooked using traditional procedures (e.g., [62, 63]).

We assessed statistical significance using a permutation test based on circular shuffling, as in earlier work [21, 61]. This procedure was repeated 1000 times with circularly time-shifted firing rate values, whereby the firing rate vector for each cell was rotated by a random offset relative to the behavioral navigation data. If the test statistic calculated on the real data was at or above the 95th percentile of the test statistics from the randomly shifted data, the parameter was considered a significant factor in modulating firing rate. Importantly, the reason we performed this circular shifting of the spike data was to preserve the temporal autocorrelation of the spikes when generating the surrogate data. As a result, the temporal structure of the data was conserved even after shuffling and the resulting p values from the surrogate distributions were comparable to the observed p values. It should be understood that this is a conservative procedure, which, in fact, makes it less likely for an observed statistic to be significant. Figures S2H and S2I show the p values resulting from circularly shifted spikes (panel H) compared to randomly shuffled spikes (panel I) for the example spatial-target cell in Figure 2B.

To test for modulation of firing rate by heading direction, a separate ANOVA was conducted with the heading quadrant (virtual north, east, south, west) as factors. The heading directions were determined by measuring the subject's heading in each epoch of the task and grouping the angles into four 90° bins. We were unable to test the effect of egocentric bearing to the chests on firing rate, because the subject was pointed directly at the chest for the majority of the navigation period. Specifically, during navigation $92 \pm 1\%$ of the time subjects were pointed within 60° of the chest. We also tested whether cells' firing rates were modulated by the serial position. There were 3 or 4 chests in each trial, and we conducted an ANOVA of firing rate by the corresponding serial position of each navigation period. Finally, to test for modulation of firing rate by subsequent memory we conducted an ANOVA with memory

performance as a factor (recalled or unrecalled). Using distance error as the memory metric (object-cued task only) results in a very similar pattern: 8 of 101 cells exhibited a significant correlation between firing rate and distance error ($p < 0.05$). Six of those cells were also identified with our analysis of memory cells ($p = 2.4 \times 10^{-12}$, $\chi^2(1) = 49.1$), suggesting that our results are not highly dependent on how we categorized memory performance.

For each cell-type category, we were interested in whether the observed cell counts significantly exceeded the 5% expected false-positive rate. As such, we tested the observed proportion of significant cells against the null hypothesis that the proportion was less than or equal to chance using one-sided binomial tests with $\alpha = 0.05$. These p values were then corrected for multiple comparisons using the FDR procedure [64], accounting for our testing of five kinds of neuronal modulations (spatial target, place, memory, serial position, and heading). Specifically, for each of the five behavioral variables of interest, we applied an FDR-correction to the five p values from the binomial tests. Next, for any behavioral variables where we observed a significant overall level of responsive cells, we then conducted a follow-up post hoc test to identify whether the proportion of cells showing a given effect was significant in a particular subregion. This follow-up test was a separate one-sided binomial test, which we also corrected using the FDR procedure across the three different subregions that we examined. See [Figure S3](#) for results from the two parameters that were not found to modulate a significant proportion of cells. Additionally, to identify potential interactions between the spatial coding patterns we found, we tabulated the neurons that showed multiple behavioral modulations ([Table S2](#)).

DATA AND CODE AVAILABILITY

Data and custom-built MATLAB scripts are available from the authors upon reasonable request. The data are not publicly available because they could compromise research participant privacy and consent.

Current Biology, Volume 30

Supplemental Information

Single-Neuron Representations of Spatial Targets in Humans

Melina Tsitsiklis, Jonathan Miller, Salman E. Qasim, Cory S. Inman, Robert E. Gross, Jon T. Willie, Elliot H. Smith, Sameer A. Sheth, Catherine A. Schevon, Michael R. Sperling, Ashwini Sharan, Joel M. Stein, and Joshua Jacobs

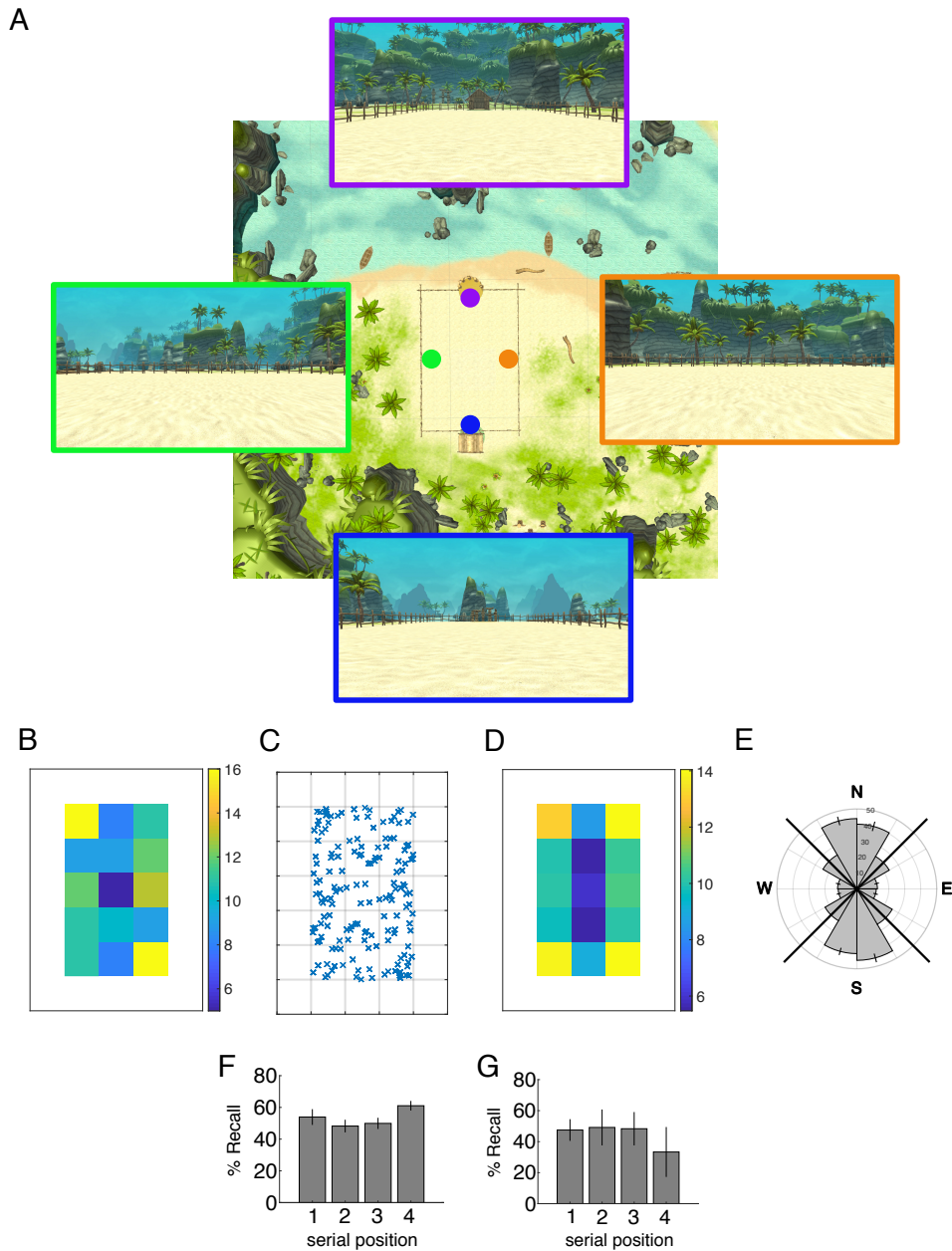


Figure S1: Behavior in the Treasure Hunt task, Related to Figure 1. (A) Central image is a map (overhead view) of the Treasure Hunt environment. The rectangular arena that subjects navigate in is in the middle. At the top end of the arena there are totem poles in a semicircle, and water in the background behind them. At the bottom end of the arena there is a hut, and behind that there is a forest. The four overlaid panels show the subjects' view from each of the locations indicated by the colored circles, with the border color matching the corresponding location. (B-E) Distribution of chest position and heading direction across sessions. (B) Number of chests in each location in a representative example session. Chests are never located in the outer border of the environment, shown in white. (C) Same data as in B, with an 'X' indicating each chest location, with gray lines indicating the environmental binning. (D) Number of chests in each grid location, averaged across all sessions. (E) Circular histogram indicating the seconds (mean and SEM) spent in each heading direction during navigation, across all sessions. Black diagonal lines indicate NESW quadrants. (F-G) Recall by serial position. Mean and SEM of the percentage of object-location pairs successfully recalled, split by the serial position the object was encountered in, for the object-cued task sessions in panel F ($p = 0.008$; repeated measures ANOVA) and the location-cued task sessions in panel G ($p = 0.1$; repeated measures ANOVA).

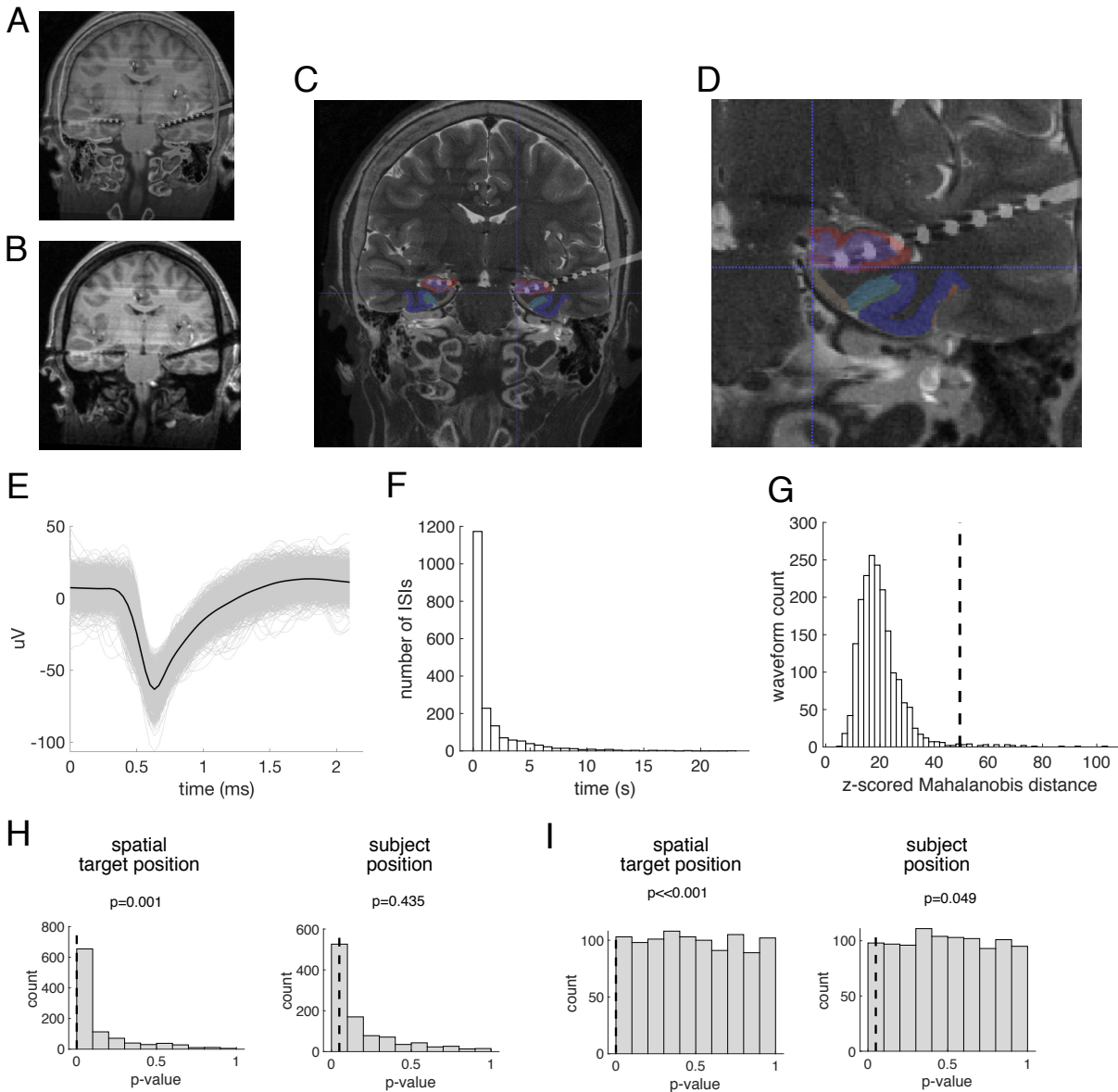


Figure S2: Methodological information on single-unit recordings and statistics, Related to STAR Methods. (A-D) Example localization of microwire bundle from patient 11. (A) Coregistered postoperative T1 MRI and CT scan. (B) Postoperative T1 MRI scan without CT. (C) Preoperative T2 structural MRI coregistered to postoperative CT. MTL subregion automatic segmentation is shown superimposed in color. ERC (tan), BA35 (light blue), BA36 (dark blue), subiculum (pink), dentate gyrus (purple), CA1 (red). (D) Close-up of the same image as in C, with crosshair on microwire bundle, showing localization to ERC. (E-G) Single-unit classification example from patient 15. (E) All waveforms across the task session in grey, and the average waveform in black. (F) Histogram of interspike intervals (ISIs), showing less than 5% (0.3163%) contamination of the refractory period of 3ms. (G) Histogram of normalized Mahalanobis distances from the mean of the cluster to each waveform. We compared that to a chi-squared distribution, and the dotted line represents the cutoff for the odds of there being any data this extreme less than 50%. Fewer than 5% of the waveforms (1.4%) were classified as outliers. (H-I) Comparison of p value distributions generated from different shuffling procedures for example spatial-target cell. (H) Histogram of p values from ANOVA assessing a parameter's modulation of firing rate for the observed data (dotted line) versus shuffled data (gray). Surrogate distribution is generated by circularly shifting spikes. Left plot is for spatial target position, and right plot is for subject position. This cell's activity is significantly modulated by the spatial target position ($p=0.001$) but not subject position ($p=0.435$). (I) Same plots as in A, but surrogate distributions are generated by randomly shuffling the spikes. Using this procedure both spatial target position and subject position are significant ($p << 0.001$; $p = 0.049$, respectively).

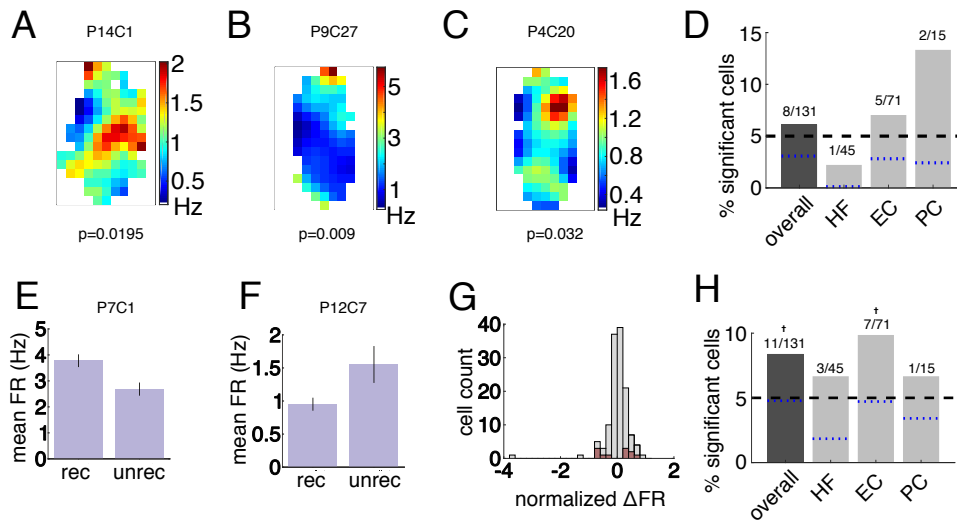


Figure S3: Neural activity related to the subject's current location and subsequent memory performance, Related to STAR Methods. (A-D) Cells significantly modulated by current location. (A) Firing rate map of navigation activity binned by subject location for a right PHC neuron from patient 14. This cell's activity is significantly modulated by the subject's virtual position (permutation-corrected ANOVA, $p = 0.0195$). (B) Example neuron from left EC of patient 9, significantly modulated by subject position ($p = 0.009$). (C) Example neuron from patient 4 in right EC, significantly modulated by subject position ($p = 0.032$). (D) Percentage of significant place-like cells by region. The black dashed line represents the 5% false positive rate, and the blue dotted lines are the lower 95% confidence interval from the one-sided binomial test for each bar. (E-H) Cells significantly modulated by subsequent memory. (E) Firing rate by subsequent memory performance for example neuron from patient 7 in the left PRC, significantly modulated by subsequent memory ($p = 0.017$). Error bars are SEM of the trial means in each condition. (F) Example neuron from patient 12 in the right EC, significantly modulated by subsequent memory ($p = 0.044$). Error bars are SEM of the trial means in each condition. (G) Histogram of cell count by normalized firing rate between conditions ((rec-unrec)/rec). Red indicates the significantly modulated cells. (H) Percentage of significant memory-related cells by region. Symbols above the bars indicate p -values from a one-sided binomial test for each proportion ($**p < 0.01$, $*p < 0.05$, $+p < 0.1$). The black dashed line represents the 5% false positive rate, and the blue dotted lines are the lower 95% confidence interval from the one-sided binomial test for each bar.

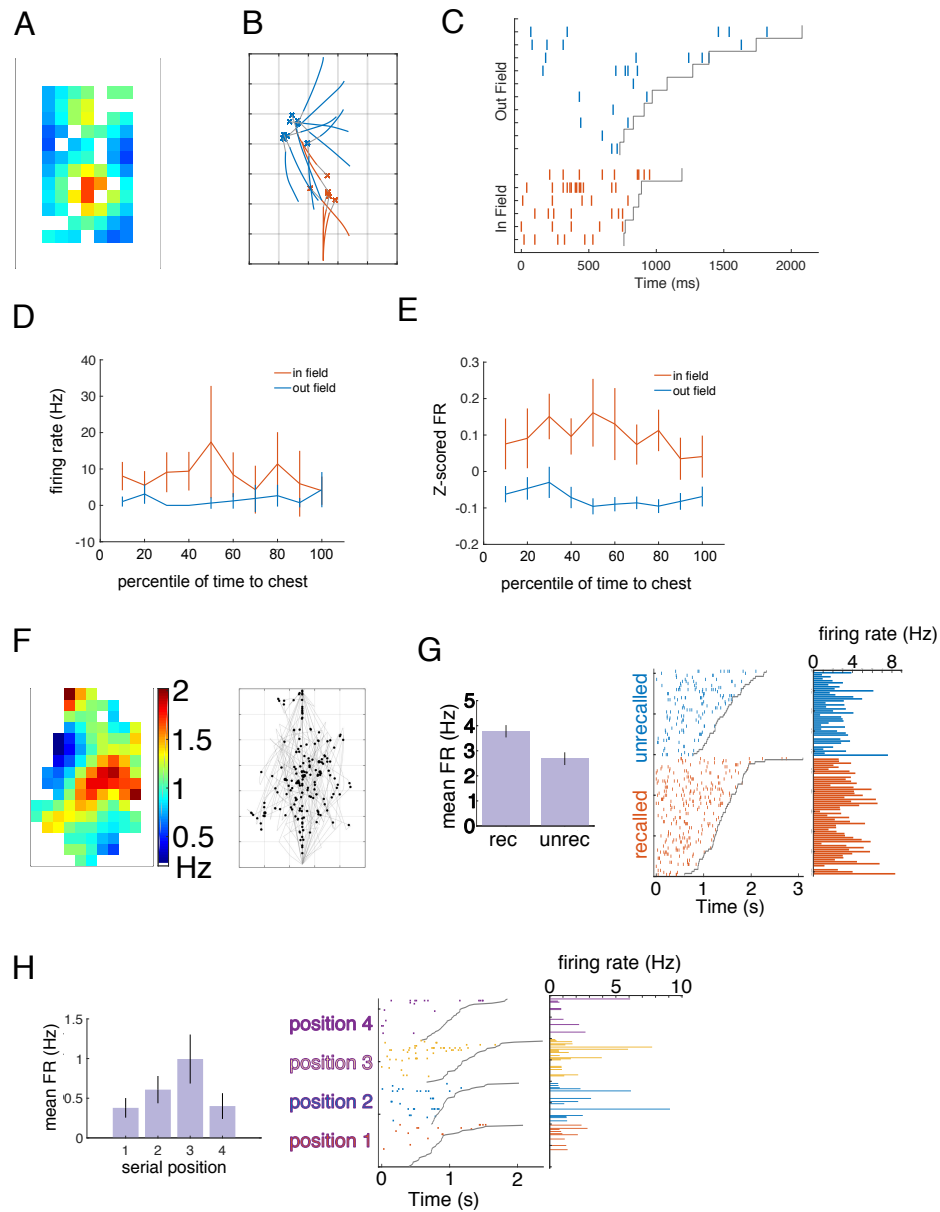


Figure S4: Example raster plots for spatial target, place, memory, and serial position cells, Related to Figures 2 and 4.

(A-E) Spatial-target cell firing rates leading to chests in and out of the firing field. (A) Firing rate map binned by chest location for example spatial target cell (same as in Figure 2B). (B) Paths to chests in field and out of field for example cell. In-field paths are in orange, out-of-field paths are in blue. (C) Raster of spikes during the paths to in and out of the field for same example cell, again color coded by in and out of field, and sorted by navigation time for each of the fields. (D) Mean and 95% confidence intervals of firing rates by normalized time to chest for example cell, split by in and out of field paths. (E) Mean and 95% confidence intervals of the z-scored firing rates across all significant spatial-target cells. (F) Example place-like cell (same as in Figure S3A). Left plot shows firing-rate map, and right panel shows the subject's path in grey with a black dot indicating each spike. (G) Example memory cell (same as in Figure S3E). Left plot shows mean firing rate by recall. Right plot shows spike rasters and corresponding firing rates split by the two conditions, and ordered by path duration for each group. Grey line indicates when navigation ended. (H) Example serial-position cell (same as in Figure 4B). Left plot shows mean firing rate by each serial position. Right plot shows spike rasters and corresponding firing rates split by serial position, and ordered by path duration for each group. Grey line indicates when navigation ended.

Patient number	Age	Gender	# Sessions	Task version	# MTL Behnke-Fried bundles	# MTL units	Electrode locations
1	22.7	M	1	object cued	2	4	R SUB, R HPC
2	52.3	M	2	object cued	6	3	L AMY, L HPC, R EC, R SUB, R HPC
3	41	M	1	object cued	1	2	L HPC
4	22.4	M	3	object cued	1	5	R EC
5	21.5	F	2	object cued	2	7	L HPC, L SUB
6	25.6	F	1	object cued	2	11	R EC
7	29.4	M	2	object cued	2	9	L SUB, L PRC
8	23.4	F	1	object cued	1	1	R HPC
9	21.9	F	3	object cued	2	39	L EC
10	27.6	M	1	object cued	2	4	L SUB, L PHC
11	47	M	1	object cued	1	8	L EC
12	20	M	1	object cued	1	8	R EC
13	21	M	1	location cued	2	12	L HPC, R HPC
14	55	M	1	location cued	2	2	R HPC, R PHC
15	43.5	F	2	location cued	2	16	L HPC, R SUB

Table S1: Patients and unit information, Related to STAR Methods. Table indicates each patient's demographics and their MTL unit counts. R/L: right/left; HPC: hippocampus, SUB: subiculum, AMY: amygdala, EC: entorhinal cortex, PRC: perirhinal cortex, PHC: parahippocampal cortex.

Brain region	Total # units	Spatial target	Place	Heading	Memory	Serial position	Spatial target and place	Spatial target and heading	Spatial target and serial position	Heading and serial position	No effects
HF	45	9	1	6	3	3	0	1	0	0	24
EC	71	12	5	7	7	16	0	1	3	4	37
PC	15	5	2	3	1	1	0	1	0	1	5
total	131	26	8	16	11	20	0	3	3	5	66

Table S2: Significant cell counts, Related to STAR Methods. *Number of cells with significant responses at different recording sites. The number of significant cells across MTL subregions are shown for each main effect and combination of main effects. Significance is determined using a shuffle-corrected ANOVA at $\alpha = 0.05$. Counts of cells that were significant for place and another main effect, or for memory and another main effect, are not shown because place-like cells and memory cells were not found at significant proportions. Counts of cells that did not show any significant effects are also shown.*